



TG-293FD



SOLUTIONS SECURING YOUR WORLD

KEY FEATURES

- 2MP H.265+ Vandal-proof Fixed Lens Mini Dome camera
- Smart Stream
- Smart IR II
- Video Content Analysis
- Reliable Anti Vibration Performance
- 140dB Super WDR
- Built in Microphone
- 0.002Lux Ultra Low-light
- IP67
- IK10

SPECIFICATIONS

Description	2MP H.265+ Vandal-proof, Mini Dome, 140dB Super WDR, 2.8mm Fixed lens,IP67/IK10, PoE	
Camera	Image Sensor	1/2.8" Progressive Scan CMOS
	Min. Illumination	Color: 0.005Lux@F1.2
		B/W: 0Lux with IR on
	WDR	140dB Super WDR
	Shutter Time	1/100000s~1s
	IR Distance	Up to 30m
	Day&Night	ICR Filter Auto Switch
S/N	>55dB	
Lens	Lens options	2.8mm@F2.0 / 3.2mm@F2.2 / 3.6mm@F2.2
Video	Max. Image Resolution	1920x1080
	Video Compression	H.265+/H.265(HEVC)/H.264+/H.264/MJPEG
Video	Video Compression	16Kbps~16Mbps(CBR/VBR Adjustable)
	Primary Stream	230fps@(1920x1080, 1280x960,1280x720, 704x576)
	Secondary Stream	30fps@(704x576, 640x480, 640x360, 352x288, 320x240, 320x192, 320x180)
	Tertiary Stream	30fps@(1920x1080, 1280x720, 704x576, 640x480, 640x360, 320x240, 320x192,
Network	Ethernet	1xRJ45 10M/100M Ethernet Port
	Network Storage	NAS(Support NFS, SMB/CIFS), ANR
	Protocol	IPv4/IPv6, ARP, TCP, UDP, RTP, RTSP, RTCP, HTTP, HTTPS, DNS, DDNS, DHCP, FTP, NTP, SMTP, SNMP, UPnP, Bonjour, SIP, PPPoE, VLAN, 802.1x, QoS, IGMP, ICMP,
Audio	Audio Compression	G.711/AAC/G.722/G.726, Built-in Microphone
System	Alarm I/O	1/1 (Multi-interface Version)
	Storage	Support microSD/SDHC/SDXC Card Local Storage, up to 256GB
	Advanced Function	BLC, HLC, 2D DNR, 3D DNR, Defog, AWB, EIS, IP Address Filtering, AGC, Anti-flicker, Corridor Mode, Deblur, Watermark
	SIP/VoIP Support	Yes, Voice & Video-over-IP
	Event Trigger	Motion Detection, Network Disconnection, External Input, Audio Alarm, etc. (Multi-interface Version)
	Event Analysis	FTP Upload, SMTP Upload, SD Card Record, External Output, SIP Phone, HTTP Notification, etc. (Multi-interface Version)
	Video Analysis	Region Entrance, Region Exiting, Advanced Motion Detection, Tamper Detection, Line Crossing, Loitering, Human Detection, People Counting, Object Left, Object Removed
	System Compatibility	ONVIF Profile G & Q & S & T, API
General	Working Temperature	-40C~60C, Humidity 0~90%(Non-condensing)
	Power Supply	PoE (802.3af) / DC 12V±10% (Multi-interface Version)
	Power Consumption	2.5W MAX, 5W MAX (With IR on)
	Weather Proof, Housing	Up to IP67-rated for Weather-resistant, Vandal-proof IK10-rated Metal Housing
	Dimensions/Weight	118.5mmX110.8mmX65mm/ 500g

ACCESSORIES



PM-293FD
Pole mount



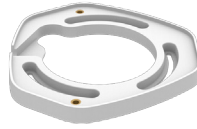
ICB-293FD
Internal Corner Bracket



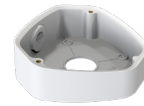
ECB-293FD
External Corner Bracket



WM-293FD
Wall Mount



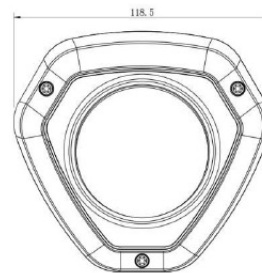
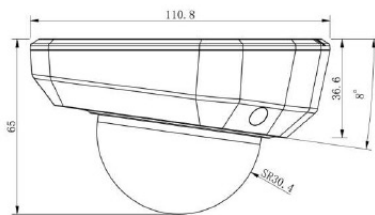
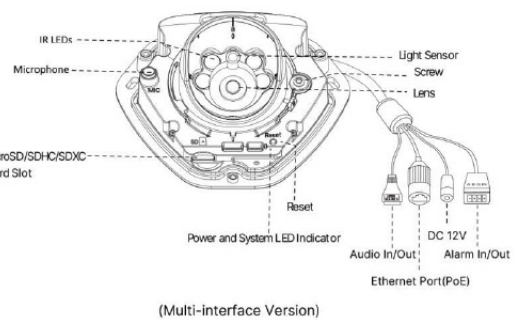
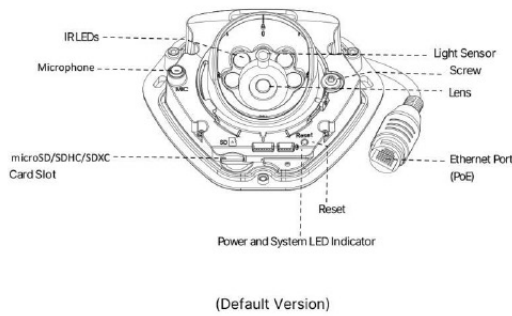
AP-293FD
Adapter Plate



JB-293FD
Junction Box

DIMENSIONS

Structure Diagram



PARTCODE

DESCRIPTION

TG-293FD

2MP H.265+ mini Dome, 140dB Super WDR, 2.8mm Fixed Lens, Standard version, microSD upto 256Gb, IP67/IK10, PoE/12VDC

TG-293FD(A)

2MP H.265+ mini Dome, 140dB Super WDR, 2.8mm Fixed Lens, Multi Interface version, microSD upto 256Gb, IP67/IK10, PoE/12VDC

UAE Address:
P3-Hamriyah Business Centre
PO Box 50235
Hamriyah Free Zone - Sharjah - UAE.
E-mail: info@tgen5.com
Tel : +97143488459