



TG-572PD/5722



SOLUTIONS SECURING YOUR WORLD

KEY FEATURES

- 5MP @ 30fps H.265+ Dome Pro Series
- Smart Stream
- Smart IR II
- Video Content Analysis
- Advance Functions
- 120dB Super WDR
- 0.005Lux Min. Illuminationt
- IP67 & IK10
- PoE Camera

SPECIFICATIONS

Description	5MP H.265+ Dome Pro series, 120dB Super WDR, 2.7~13.5mm motorised, IP67/IK10, PoE	
Camera	Image Sensor	1/2.8" Progressive Scan CMOS
	Min. Illumination	Color: 0.005Lux@F1.2
		B/W: 0Lux with IR on
	WDR	120dB Super WDR
	Shutter Time	1/100000s~1s
	IR Distance	Up to 50m, Lens (2.7~13.5mm), 90m (7~22mm@F1.4)
	Day&Night	ICR Filter Auto Switch
S/N	>55dB	
Lens	Lens	Motorized 3.0~10.5mm/2.7~13.5mm/7~22mm@F1.4
	Focus Control	Auto/Manual
	Iris Control	Auto
Video	Max. Image Resolution	2592x1944
	Video Compression	H.265+/H.265(HEVC)/H.264+/H.264/MJPEG
Video	Video Compression	16Kbps~16Mbps(CBR/VBR Adjustable)
	Primary Stream	30fps@(1920x1080, 1280x960,1280x720,704x576)
	Secondary Stream	30fps@(704x576, 640x480, 640x360, 352x288, 320x240, 320x192, 320x180)
	Tertiary Stream	30fps@(1920x1080, 1280x720, 704x576, 640x480, 640x360, 320x240, 320x192,
Network	Ethernet	1xRJ45 10M/100M Ethernet Port
	Network Storage	NAS(Support NFS, SMB/CIFS), ANR
	Protocol	IPv4/IPv6, ARP, TCP, UDP, RTP, RTSP, RTCP, HTTP, HTTPS, DNS, DDNS, DHCP, SSL, FTP, NTP, SMTP, SNMP, UPnP, Bonjour, SIP, PPPoE, VLAN, 802.1x, QoS, IGMP, ICMP,
Audio	Audio Compression	G.711/AAC/G.722/G.726
System	Alarm I/O	Built-in Microphone and 1 Audio Output interface
	Storage	Support microSD/SDHC/SDXC Card Local Storage, up to 256GB
	Advanced Function	BLC, HLC, 2D DNR, 3D DNR, Defog, AWB, EIS, IP Address Filtering, AGC, Anti-flicker, Corridor Mode, Deblur, Watermark
	SIP/VoIP Support	Yes, Voice & Video-over-IP
	Event Trigger	Motion Detection, Network Disconnection, Audio Alarm, External Input, etc.
	Event Analysis	FTP Upload, SMTP Upload, SD Card Record, SIP Phone, HTTP Notification, etc.;
	Video Analysis	Region Entrance, Region Exiting, Advanced Motion Detection, Tamper Detection, Line Crossing,Loitering,Human Detection, People Counting, Object Left,
	System Compatibility	ONVIF Profile G & Q & S & T, API
General	Working Temperature	-40C~60C, Humidity 0~90%(Non-condensing)
	Power Supply	PoE (802.3af)/ DC 12V±10%
	Power Consumption	8W MAX, 12W MAX (With IR on)
	Weather Proof, Housing	Up to IP67-rated for Weather-resistant, Vandal-proof IK10-rated Metal Housing
	Dimensions/Weight	Ø143mmX108.4mm/1.1Kg

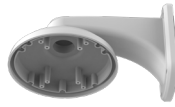
ACCESSORIES



JB-572PD
Junction Box



ICB-572PD
Internal Corner bracket



WM-572PD
Wall Mount

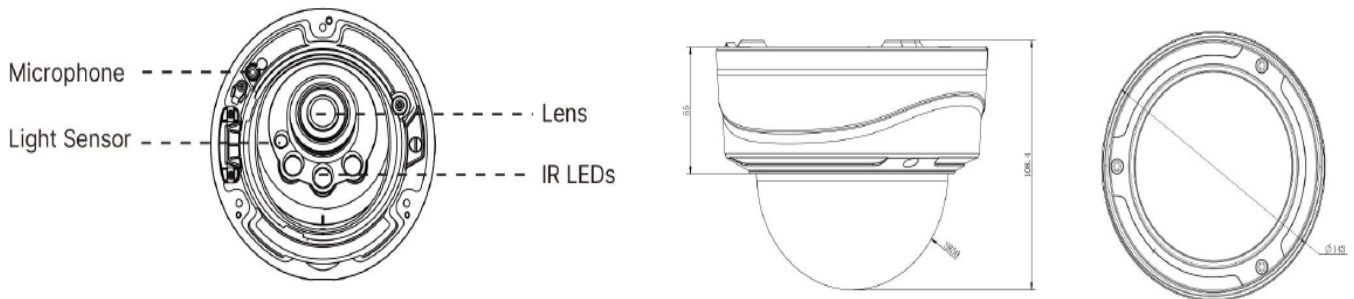


SDC-572PD
Smoke Dome cover



PM-572PD
Pendant Mount

DIMENSIONS



PARTCODE

DESCRIPTION

TG-572PD

5MP H.265+ mini Dome, 120dB Super WDR, 2.7~13.5mm Motorised 2.7~13.5mm, microSD upto 256Gb, IR50m IP67/IK10, PoE/12VDC

TG-5722

5MP @ 30fps H.265+/H.265/H.264+/H.264, AI Motorized Pro Dome Network Camera, Motorized lens Lens 7-22mm, IR90m, Color:0.005Lux, SuperWDR 120dB, PoE/DC 12V, Supports Multi port: Built-in Mic, IP67/IK10. Also available in Black Housing.

UAE Address:
P3-Hamriyah Business Centre
PO Box 50235
Hamriyah Free Zone - Sharjah - UAE.
E-mail: info@tgen5.com
Tel: +97143488459

[HTTPS://TGEN5.COM](https://tgen5.com)